

# DISCLAIMER

By using this product, you agree to the following terms:

## Warranty Conditions

Any modification, tampering, or unauthorized repair of this product will void the warranty. If you decide to alter, "customize," or otherwise mess with it, you're fully responsible for the outcome.

## Liability Waiver

We are not responsible for any damage, injury, or chaos caused by improper use, unauthorized modifications, or failure to follow the provided instructions. If you're about to do something questionable, stop and contact us first. Seriously.

## Intended Use

This product is designed for **normal use in overlanding\***. Using it for anything else is entirely at your own risk. We can't protect you from bad ideas or reckless experimentation.

## Safety First

Use this product responsibly and with the proper tools and equipment. If you're unsure about anything, don't improvise—reach out to us first. Don't blame us if you hurt yourself doing something we explicitly told you not to do.

**Got questions? Don't wing it. Contact us before doing anything outside the scope of normal use.**

## \*Normal Use in Overlanding

This product is designed to withstand the typical demands of overlanding and off-road adventures, including:

**Vehicle Travel on Off-Road Terrain:** Gravel roads, dirt trails, and uneven surfaces within the vehicle's capabilities.

**Carrying Gear:** Securing cargo, such as camping equipment, storage boxes, and other accessories, within the stated weight limits.

**Exposure to Outdoor Conditions:** Reasonable exposure to weather, such as rain, wind, and sunlight, under normal outdoor use.

## What's Not Included in Normal Use:

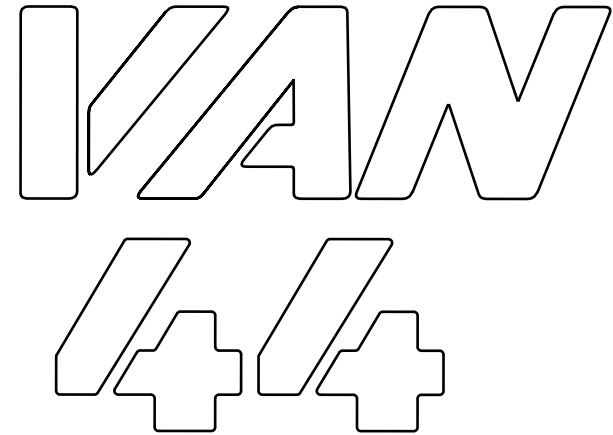
**Exceeding Weight Capacity:** Overloading the rack beyond its stated maximum weight limit, whether stationary or in motion.

**Impacts or Collisions:** Damage resulting from accidents, impacts with low-hanging objects, or other collisions.

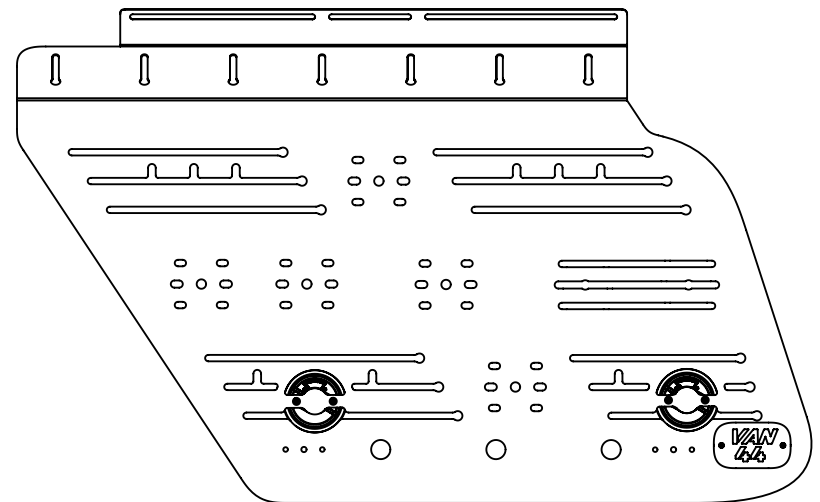
**Improper Attachment:** Failure to securely fasten cargo, which may result in damage to the rack, vehicle, or items being transported.

**Extreme Conditions:** Submersion in water, exposure to corrosive materials, or prolonged use in extreme weather beyond the product's specifications.

**Unauthorized Modifications:** Drilling, cutting, or altering the rack in any way that affects its structural integrity.



# EXTERIOR ORGANIZER PANEL VARIOUS MODELS

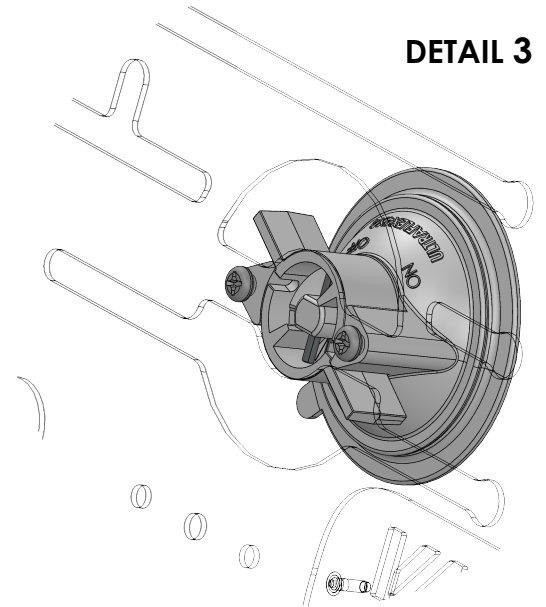
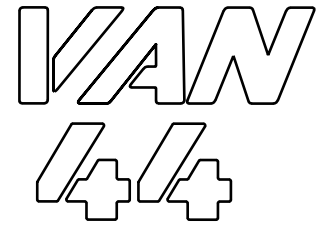
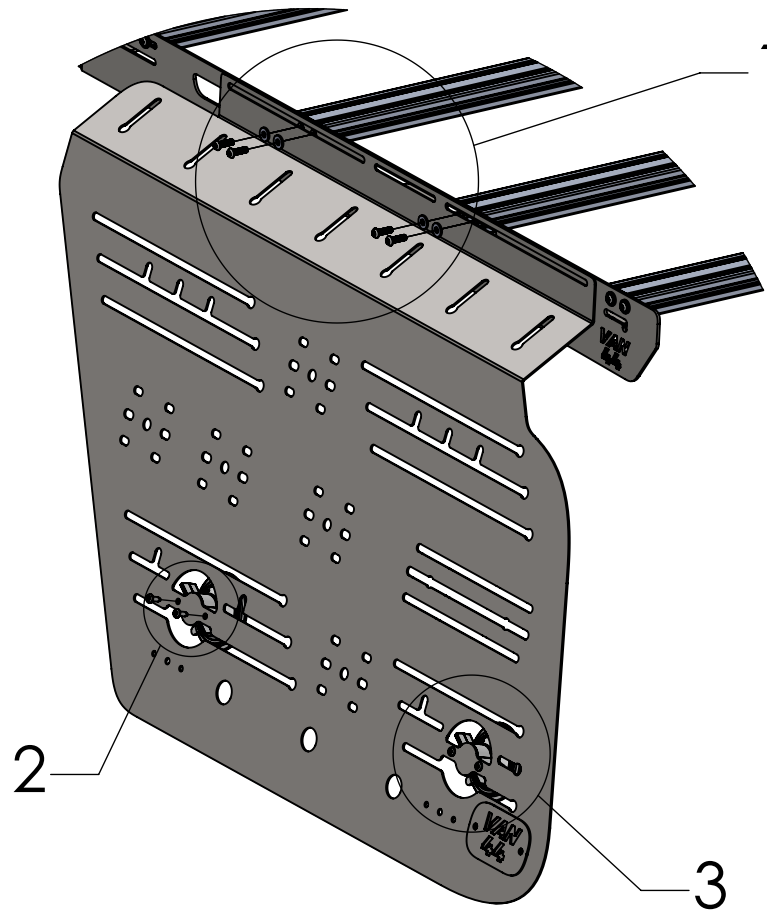
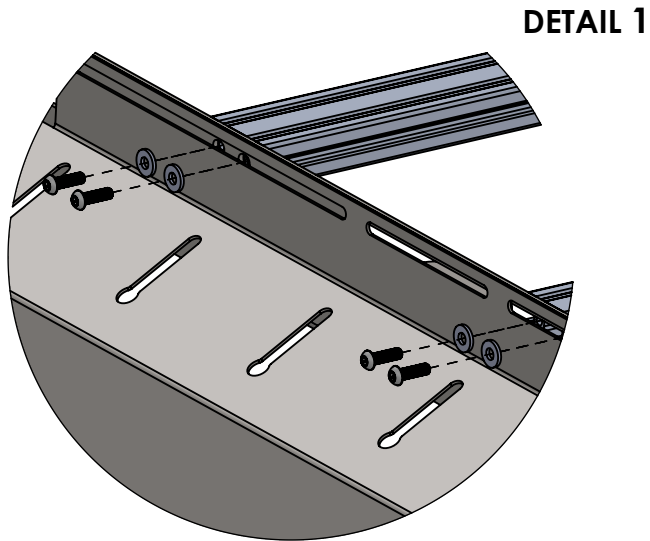


VAN44.COM  
SUPPORT@VAN44.COM  
INSTAGRAM: @VAN44\_OFFROAD

# INSTRUCTIONS

## STEP 1

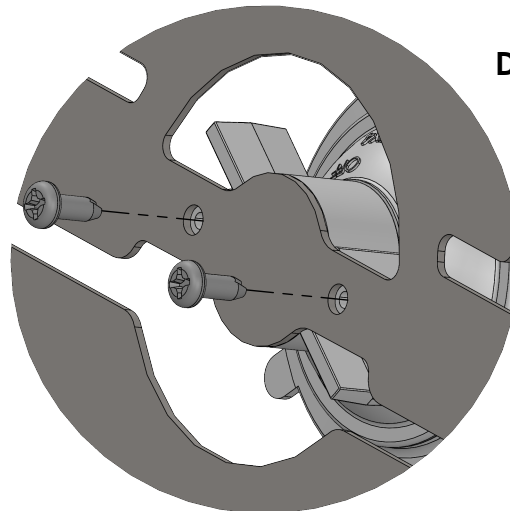
USE CORRESPONDING ROOF RACK CROSSBAR  
HARDWARE TO ATTACH ORGANIZER PANEL,  
USING EXISTING HARDWARE USED TO FASTEN  
THE ROOF RAILS  
(FOR VAN44 ROOF RACK)



## STEP 2

INSTALL THE 2 SUCTION CUPS WITH THE  
PROVIDED SCREWS.

**\*CAUTION - PLASTIC THREADS\***  
USE A MANUAL SCREWDRIVER ONLY



## STEP 3

ONCE THE RACK IS SECURELY  
ATTACHED TO THE ROOF RACK, PRESS  
THE SUCTION CUP TIGHTLY AGAINST  
THE WINDOW AND TURN THE HANDLE  
**CLOCKWISE** TO THE **ON** POSITION.

**ENSURE THAT THE WINDOW AND SURFACE OF  
SUCTION CUP IS COMPLETELY FREE OF DUST  
AND DEBRIS.**